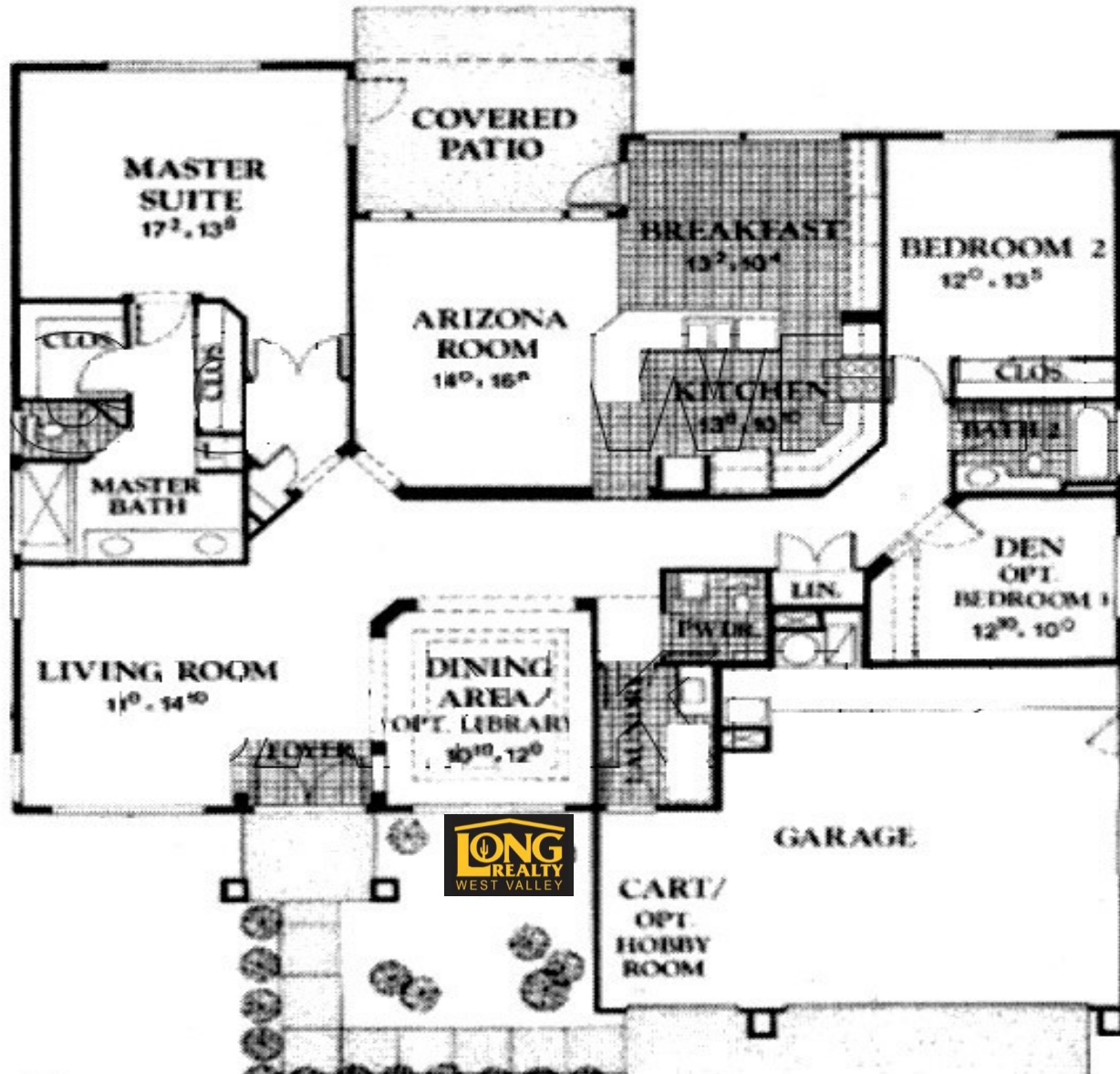


The "Truxton" in S.C.W. 2267 sqft Split 2BR, 2.5BA, Den 1996



**THE TRUXTON P2611**

Spacious master suite, Great Room in addition to formal living and dining rooms, 2½ baths, 2½ car garage with separate cart entry.

2,267 sq. ft.



Craig Rhodes | Sun City West Expert

"Excellence in Client Care"

[AZ-Homes-Online.com](http://AZ-Homes-Online.com)

