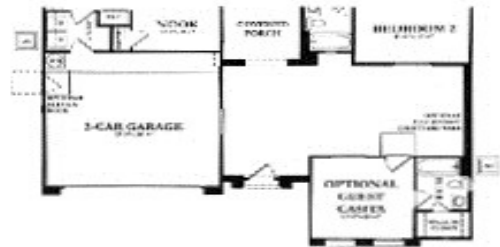
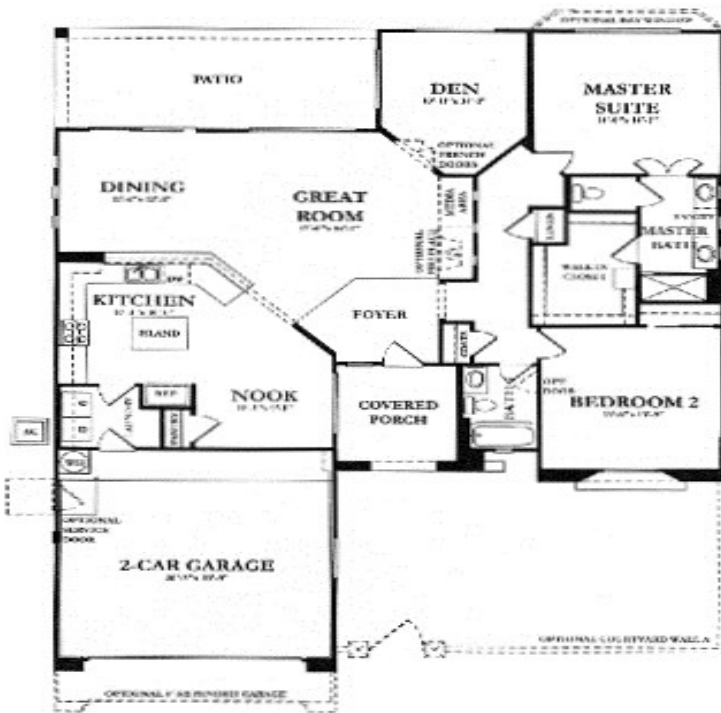


The "San Ysidro" in Corte Bella 1811 sqft. 2BR, 2BA, Den

The San Ysidro
 GREAT ROOM, BREAKFAST NOOK, 2 BEDROOMS, DEN, 2 BATHS,
 2-CAR GARAGE, COVERED PATIO
 LIVABLE AREA: 1,811 SQUARE FEET



OPTIONAL FULL HEIGHT
 OR 4' COURTYARD WALL
 WITH GUEST CASITA



OPTIONAL 4' HIGH
 COURTYARD WALL WITH GATE



ELEVATION A



ELEVATION B



ELEVATION C



Craig Rhodes | The Cascade Team

"Excellence in Customer Care"

AZ-Homes-Online.com

