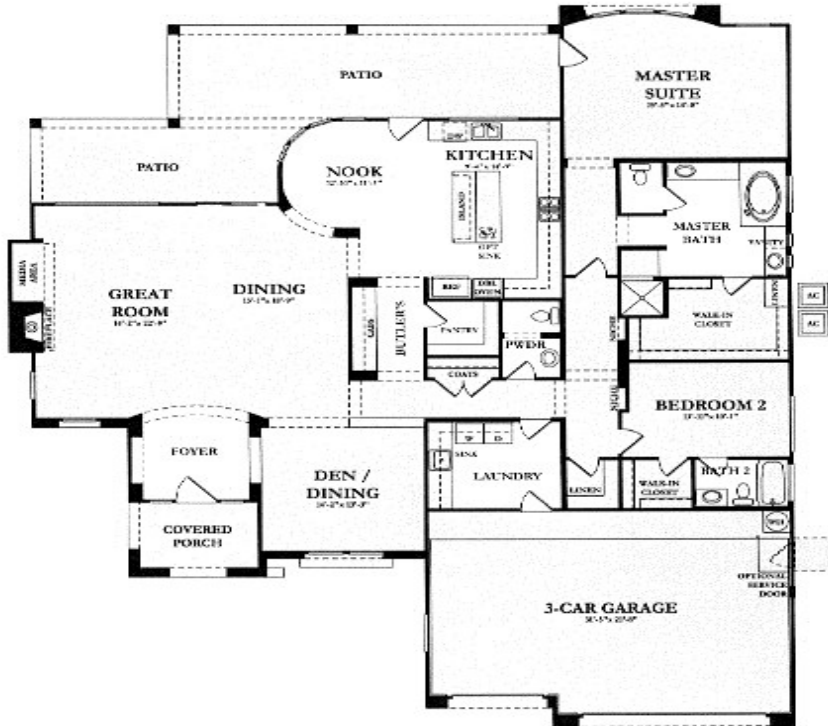


**The “Figuroa” in Corte Bella 2785 sqft. Lg. 2 BR, 2.5 BA  
3 Car Garage, Fireplace, Great Room, Breakfast Nook**

*The Figuroa*

GREAT ROOM WITH FIREPLACE, BREAKFAST NOOK,  
2 BEDROOMS, DEN, 2.5 BATHS, 3-CAR GARAGE, COVERED PATIO  
LIVABLE AREA: 2,785 SQUARE FEET



OPTIONAL FULL HEIGHT  
COURTYARD WALL WITH DOOR



OPTIONAL 4' HIGH COURTYARD  
WALL WITH GATE



ELEVATION A



ELEVATION B



ELEVATION C



Craig Rhodes | The Cascade Team

“Excellence in Customer Care”

[AZ-Homes-Online.com](http://AZ-Homes-Online.com)

